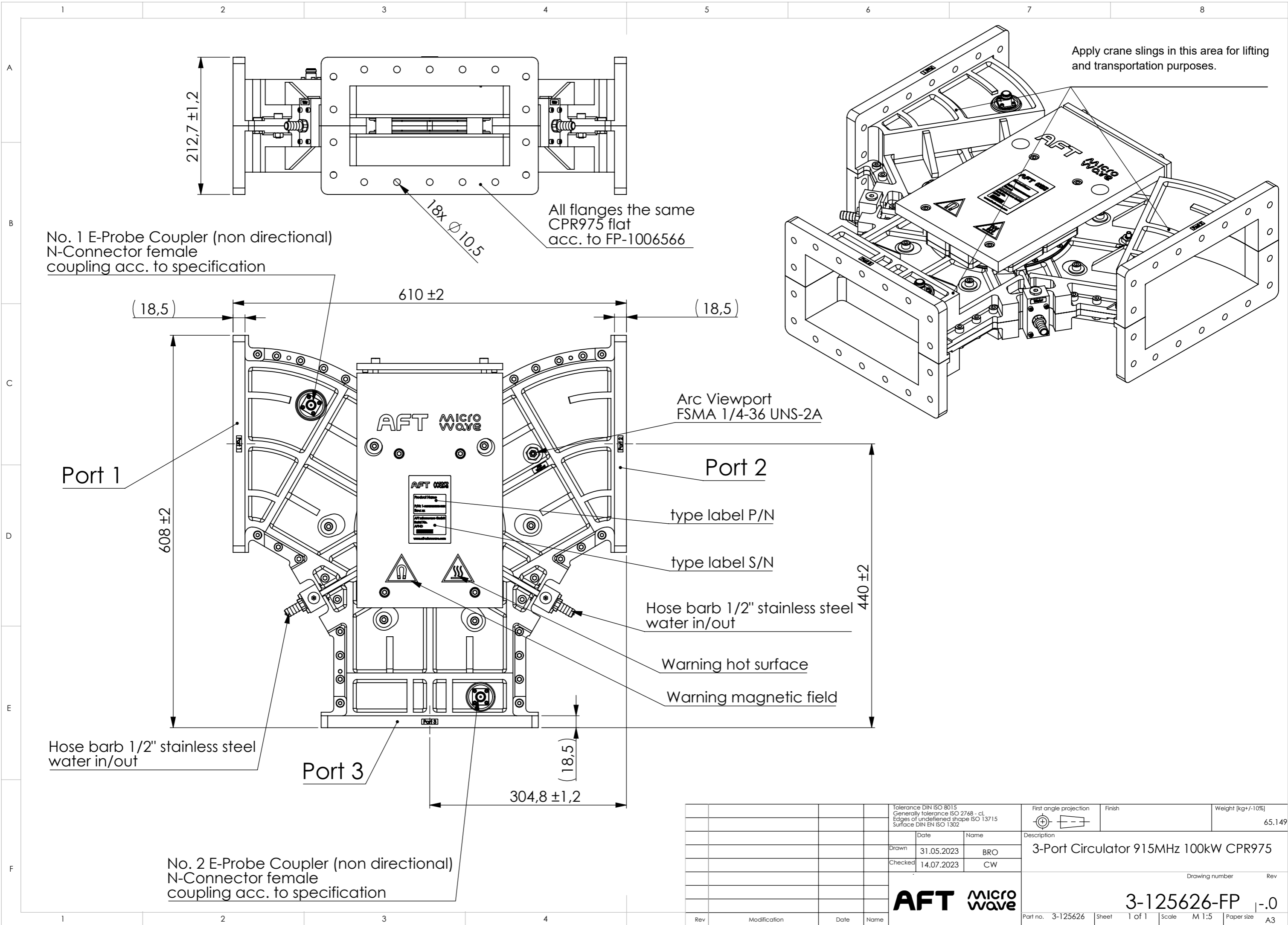


Urheberrechtlich geschützt am: Dienstag, 9. Januar 2024 10:47:26  
 Offenders are liable of the payment of damages. All rights are reserved in the event of the grant of a patent or the registration of a utility model or design.  
 Copying this document and giving it to others and the use or communication of the contents here of, are forbidden without express authority.

Zuletzt gespeichert am: Dienstag, 9. Januar 2024 10:47:26  
 Zuletzt gespeichert von: broos  
 Zeichnungs-Druckstatus: 00003 - Freigegeben



No. 1 E-Probe Coupler (non directional)  
N-Connector female  
coupling acc. to specification

All flanges the same  
CPR975 flat  
acc. to FP-1006566

Apply crane slings in this area for lifting  
and transportation purposes.

Port 1

Port 2

Port 3

Arc Viewport  
FSMA 1/4-36 UNS-2A

type label P/N

type label S/N

Hose barb 1/2" stainless steel  
water in/out

Warning hot surface

Warning magnetic field

Hose barb 1/2" stainless steel  
water in/out

No. 2 E-Probe Coupler (non directional)  
N-Connector female  
coupling acc. to specification

Tolerance DIN ISO 8015 Generally tolerance ISO 2768 - ct Edges of undrilled shape ISO 13715 Surface DIN EN ISO 1302		First angle projection	Finish	Weight [kg+/-10%] 65.149
Date	Name	Description		
Drawn 31.05.2023	BRO	3-Port Circulator 915MHz 100kW CPR975		
Checked 14.07.2023	CW	Drawing number Rev		
Rev		Modification		Date Name
AFT MICROWAVE		3-125626-FP		1-.0
Part no. 3-125626	Sheet 1 of 1	Scale M 1:5	Paper size A3	